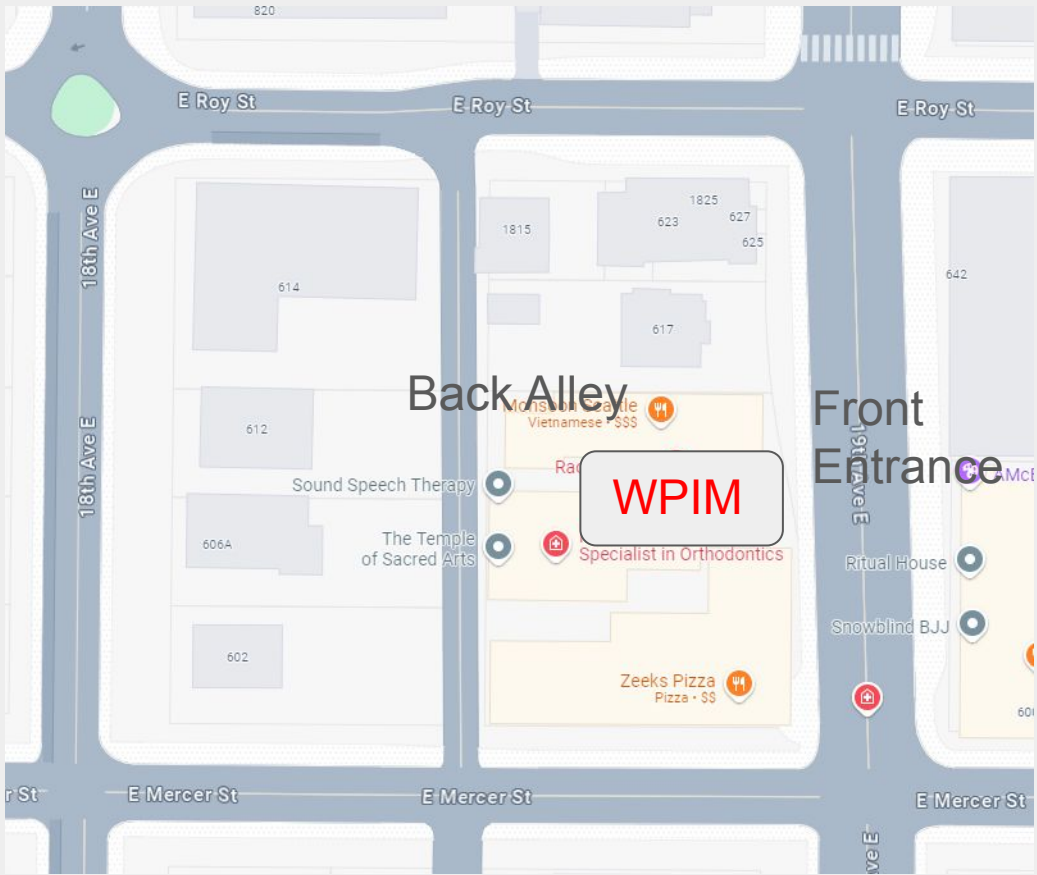


Wise Patient Internal Medicine: Accessing the New Clinic Space

Hi Everyone!

WPIM recently announced via newsletter/email a move downstairs within the Mercer Professional Building. We have gotten some much appreciated feedback that there are still challenges navigating the maze-like space. Compiled is a helpful guide to the various routes into the new clinic.



Back Alley

Front Entrance

WPIM

E Roy St

18th Ave E

19th Ave E

E Mercer St

614

612

606A

602

1815

1825

623

627

625

617

642

601

Sound Speech Therapy

The Temple of Sacred Arts

MONSIEUR ZIEGLER
Vietnamese • SSS

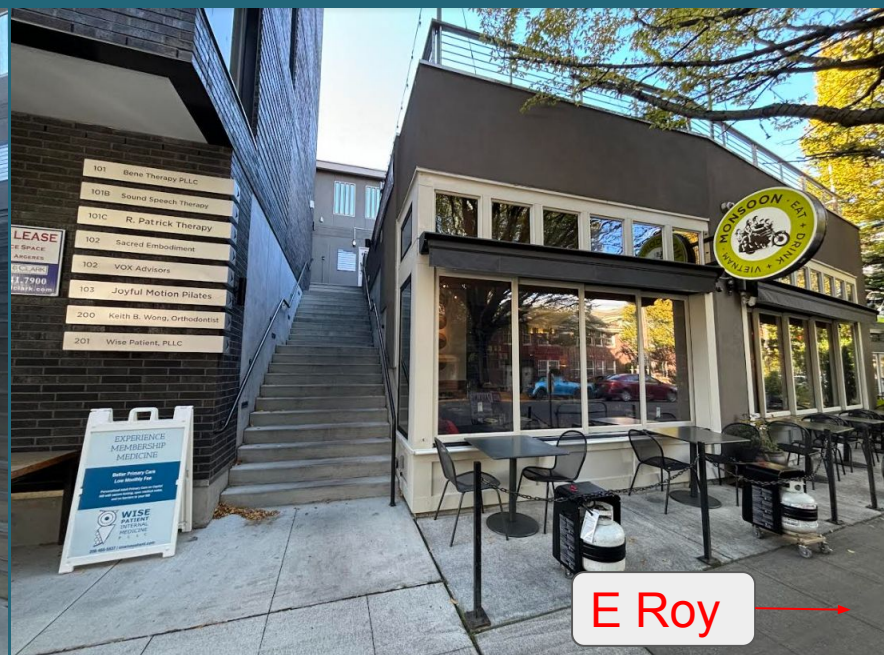
Specialist in Orthodontics

Zeeks Pizza
Pizza • SS

Ritual House

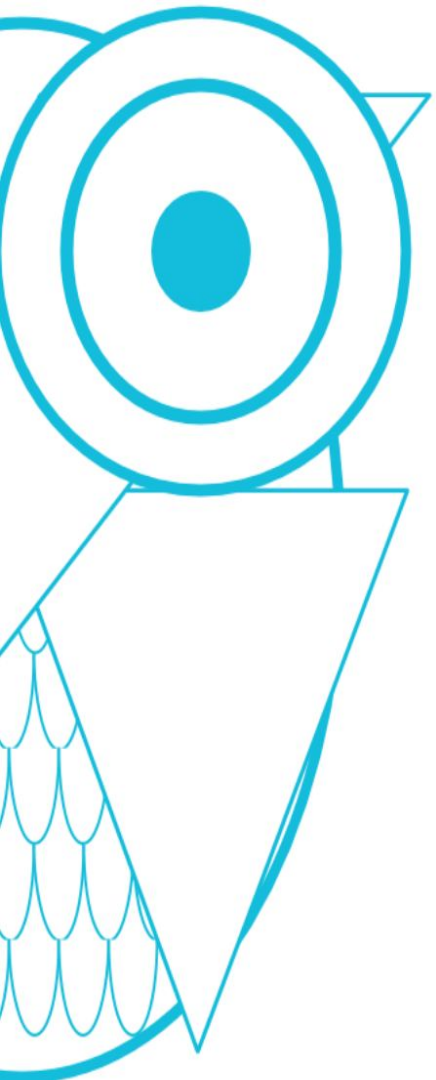
Snowblind BJJ

Front access will still be using the same set of stairs in between the restaurants Zeeks (near E Mercer) and Monsoon (near E Roy)



The landing will also be the same as before, the front entrance just a few doors earlier





ADA and Back Access Guide



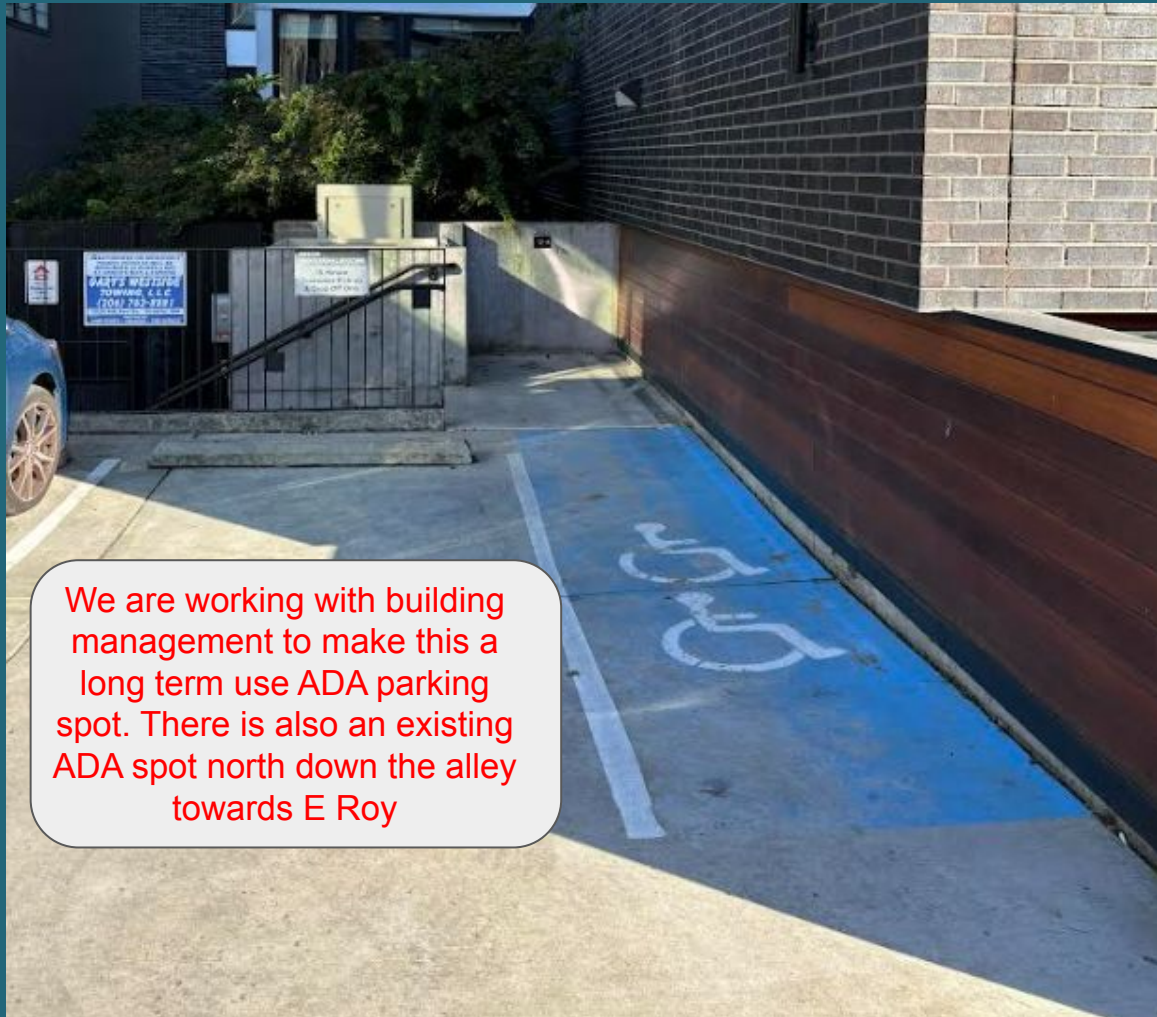
E Roy &
former back
ramp

Back Alleyway (between
18th and 19th)



E Mercer

Lift & short set
of stairs



We are working with building management to make this a long term use ADA parking spot. There is also an existing ADA spot north down the alley towards E Roy



Back door will be locked but give the office a call if you prefer to be let in this way



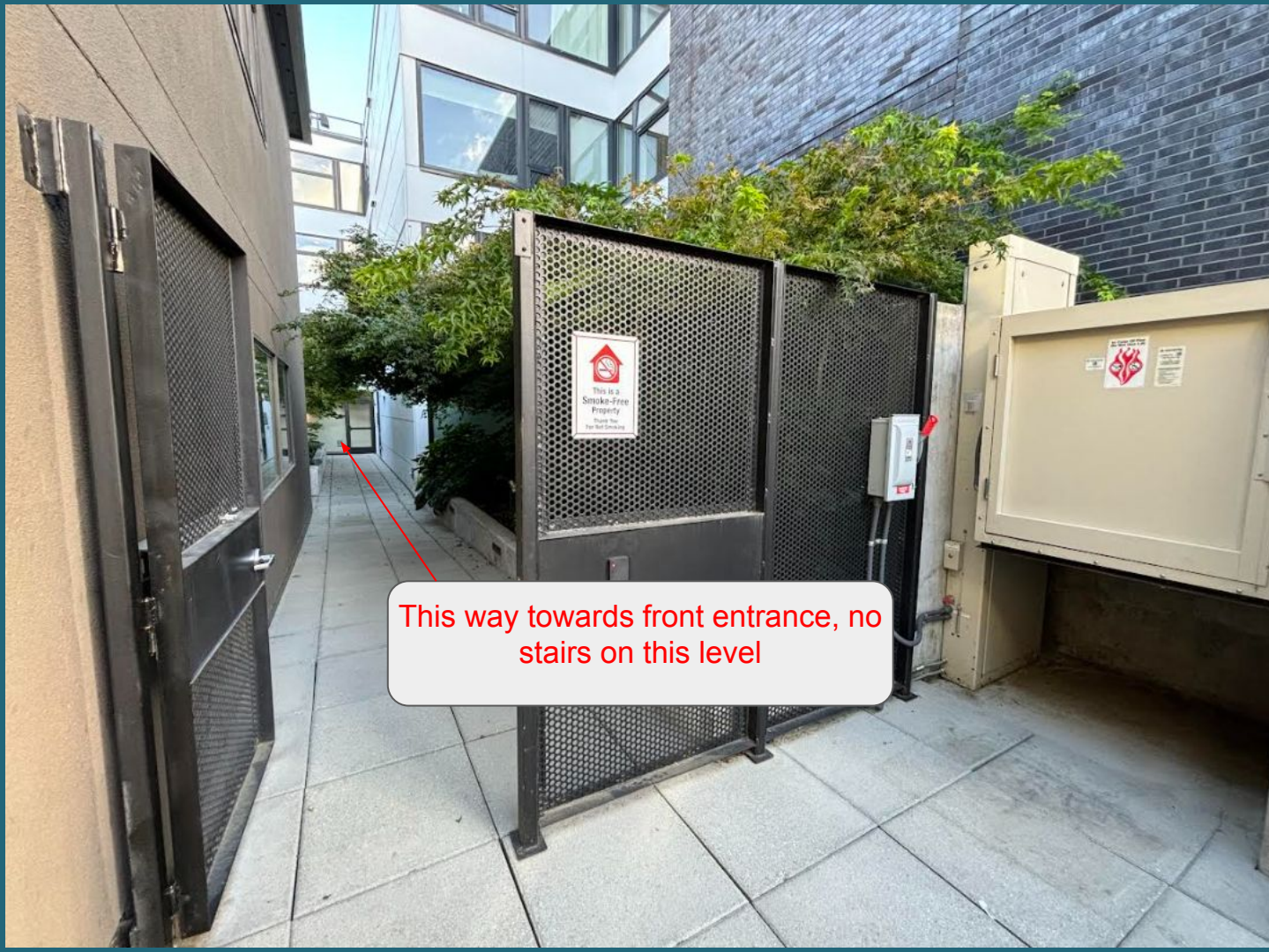
Operating the ADA Lift





Press the button with the corresponding numeral of the floor you are on to unlatch the door (higher level is II, lower level is I). Once inside, press the floor you would like to go to. There are emergency stop buttons as needed.

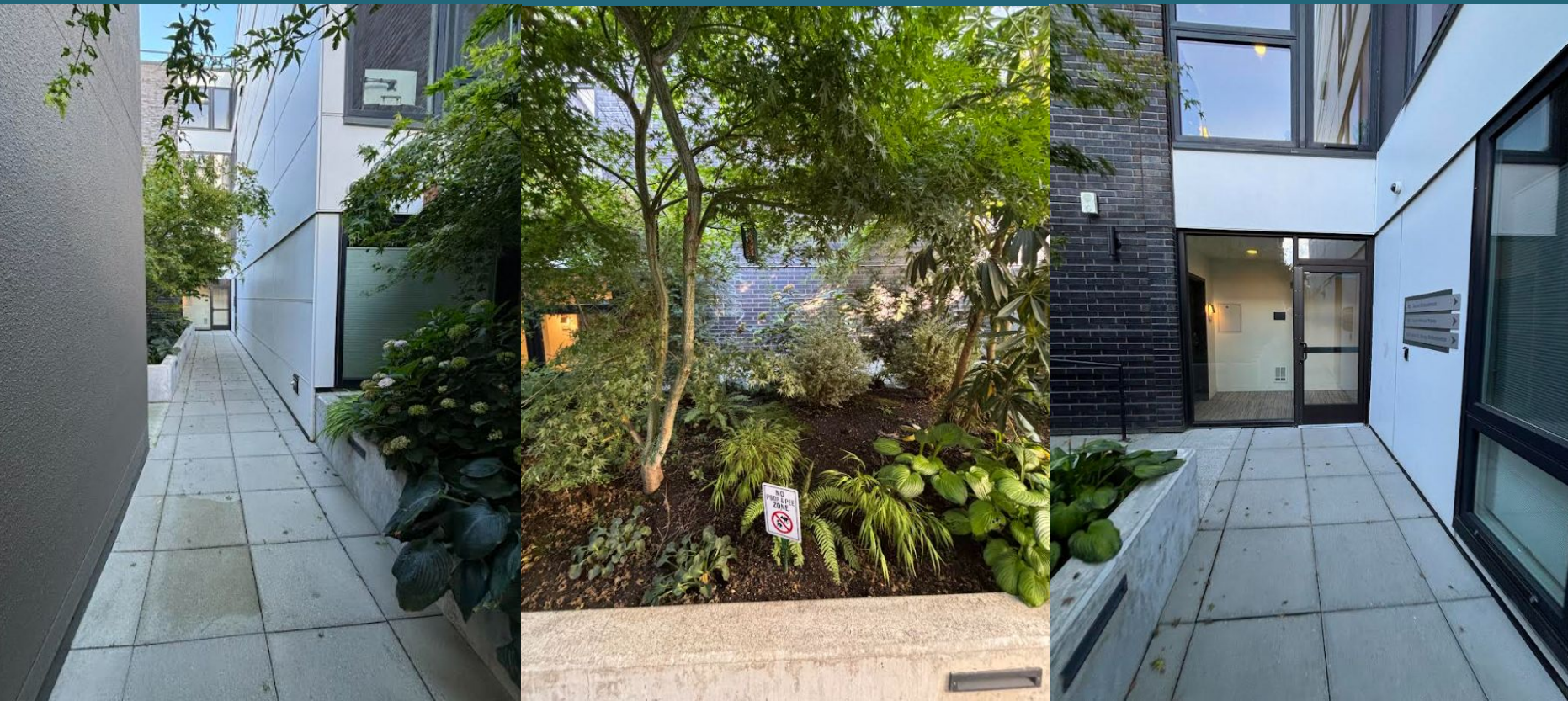




This is a
Smoke-Free
Property
Please Do
Not Smoke

This way towards front entrance, no stairs on this level

Along the way, you may stop and admire some birds at the suet bird feeder amongst the greenery!





Turn left at the end of the walkway
and it will lead you to the landing from
the beginning of the guide

Reach out if you have any
questions or concerns, a
team member will be
happy to help!